

\$295,000 - 17 16933 115 Street, Edmonton

MLS® #E4429869

\$295,000

3 Bedroom, 2.00 Bathroom, 1,201 sqft
Condo / Townhouse on 0.00 Acres

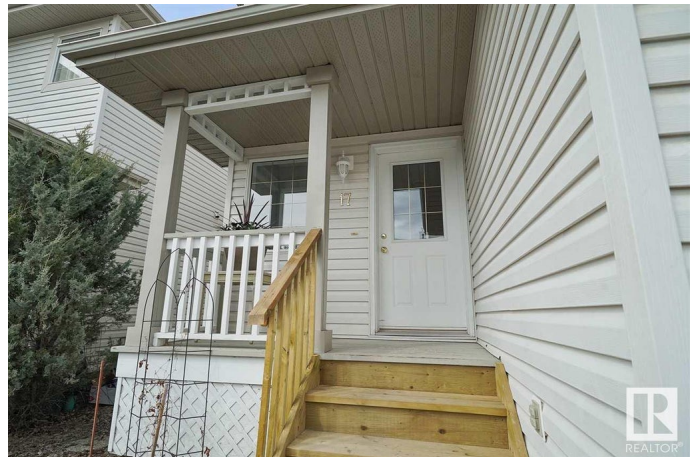
Canossa, Edmonton, AB

Welcome to 17 16933 115 Street NW – an incredible opportunity in the heart of family-friendly Canossa! This 2-storey half-duplex fixer-upper offers amazing value and endless potential for first-time buyers looking to build sweat equity or investors hunting for a smart buy. With a bit of TLC, this gem can truly shine! Step inside to a welcoming main floor featuring a cozy living area with a NG FP, dining space with access to the rear deck, & a functional kitchen complete with a newer refrigerator. A 2-piece powder room completes the main level. Upstairs, you’ll find 3 bedrooms including a spacious primary suite with a private 2-piece ensuite, plus a full 4-piece bathroom for the family. The finished basement adds valuable living space with a versatile family room & a good-sized laundry/utility area. Enjoy summer days in your fenced, landscaped backyard. The attached garage adds year-round convenience. Located in the well-kept community of Coventry Court just minutes from shopping, parks, schools & More!

Built in 2002

Essential Information

MLS® #	E4429869
Price	\$295,000



Bedrooms	3
Bathrooms	2.00
Full Baths	1
Half Baths	2
Square Footage	1,201
Acres	0.00
Year Built	2002
Type	Condo / Townhouse
Sub-Type	Half Duplex
Style	2 Storey
Status	Active

Community Information

Address	17 16933 115 Street
Area	Edmonton
Subdivision	Canossa
City	Edmonton
County	ALBERTA
Province	AB
Postal Code	T5X 6E3

Amenities

Amenities	Deck, Hot Water Natural Gas
Parking	Single Garage Attached

Interior

Interior Features	ensuite bathroom
Appliances	Dishwasher-Built-In, Dryer, Garage Control, Garage Opener, Hood Fan, Refrigerator, Stove-Electric, Washer, Window Coverings
Heating	Forced Air-1, Natural Gas
Stories	3
Has Basement	Yes
Basement	Full, Finished

Exterior

Exterior	Wood, Vinyl
Exterior Features	Flat Site, Schools, Shopping Nearby
Roof	Asphalt Shingles
Construction	Wood, Vinyl

Foundation Concrete Perimeter

School Information

Elementary Baturyn School
Middle Mary Butterworth School
High Queen Elizabeth School

Additional Information

Date Listed April 9th, 2025
Days on Market 11
Zoning Zone 27
Condo Fee \$319

DATA IS DEEMED RELIABLE BUT IS NOT GUARANTEED ACCURATE BY THE REALTORS® ASSOCIATION OF EDMONTON. COPYRIGHT 2025 BY THE REALTORS® ASSOCIATION OF EDMONTON. ALL RIGHTS RESERVED.Trademarks are owned or controlled by the Canadian Real Estate Association (CREA) and identify real estate professionals who are members of CREA (REALTOR®, REALTORS®) and/or the quality of services they provide (MLS®, Multiple Listing Service®)
Listing information last updated on April 20th, 2025 at 6:02pm MDT