

Courtesy Of Tyler J Suchan Of RE/MAX River City

\$220,000 - 11372 139 Avenue, Edmonton

MLS® #E4429067

\$220,000

3 Bedroom, 1.50 Bathroom, 995 sqft
Condo / Townhouse on 0.00 Acres

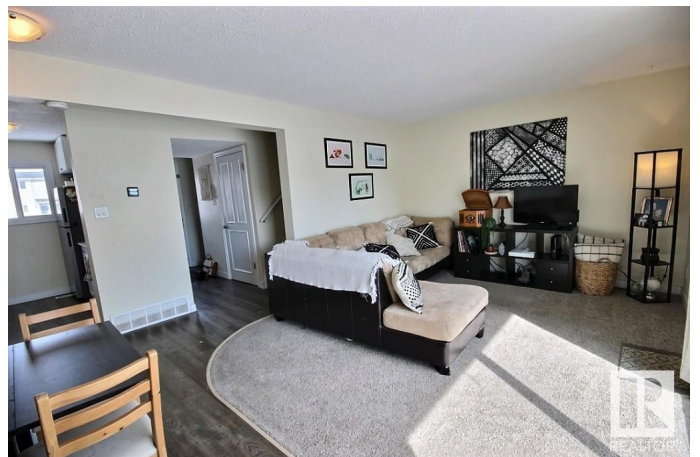
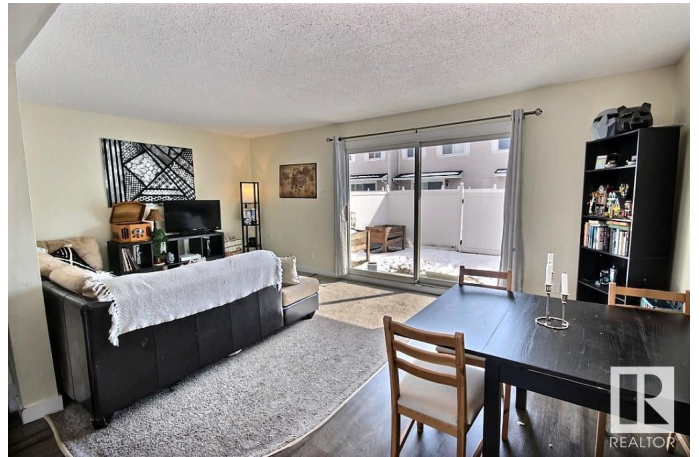
Carlisle, Edmonton, AB

Great Value! 3 bedroom townhouse located in a quite neighborhood with easy access to school, public transit, parks, and shops. This End/Corner unit has a sunny south facing living room with a fully fenced backyard. Upstairs features 3 bedroom and 1 full bathroom. A 2nd half bathroom is on the main floor. Basement has the laundry area and partly finished with a room drywalled and ready for future development. Parking stall at front and ample visitor parking just a few steps away. The current owner rents a 2nd stall directly out front of the unit for \$25/mth. Well managed complex with recent upgrades including newer shingles, windows, vinyl siding, exterior doors and maintenance free fence. Immediate possession is available. Act Now!

Built in 1977

Essential Information

| | |
|----------------|-----------|
| MLS® # | E4429067 |
| Price | \$220,000 |
| Bedrooms | 3 |
| Bathrooms | 1.50 |
| Full Baths | 1 |
| Half Baths | 1 |
| Square Footage | 995 |
| Acres | 0.00 |



| | |
|------------|-------------------|
| Year Built | 1977 |
| Type | Condo / Townhouse |
| Sub-Type | Townhouse |
| Style | 2 Storey |
| Status | Active |

Community Information

| | |
|-------------|------------------|
| Address | 11372 139 Avenue |
| Area | Edmonton |
| Subdivision | Carlisle |
| City | Edmonton |
| County | ALBERTA |
| Province | AB |
| Postal Code | T5X 3L4 |

Amenities

| | |
|-----------|--|
| Amenities | Detectors Smoke, Hot Water Natural Gas, No Smoking Home, Parking-Visitor |
| Parking | 2 Outdoor Stalls, Stall |

Interior

| | |
|--------------|--|
| Appliances | Dryer, Fan-Ceiling, Hood Fan, Refrigerator, Stove-Electric, Washer |
| Heating | Forced Air-1, Natural Gas |
| Stories | 2 |
| Has Basement | Yes |
| Basement | Full, Unfinished |

Exterior

| | |
|-------------------|--|
| Exterior | Wood, Vinyl |
| Exterior Features | Corner Lot, Fenced, Low Maintenance Landscape, Picnic Area, Playground Nearby, Public Transportation, Schools, Shopping Nearby |
| Roof | Asphalt Shingles |
| Construction | Wood, Vinyl |
| Foundation | Concrete Perimeter |

Additional Information

| | |
|----------------|-----------------|
| Date Listed | April 4th, 2025 |
| Days on Market | 8 |
| Zoning | Zone 27 |

Condo Fee \$409

DATA IS DEEMED RELIABLE BUT IS NOT GUARANTEED ACCURATE BY THE REALTORS® ASSOCIATION OF EDMONTON. COPYRIGHT 2025 BY THE REALTORS® ASSOCIATION OF EDMONTON. ALL RIGHTS RESERVED. Trademarks are owned or controlled by the Canadian Real Estate Association (CREA) and identify real estate professionals who are members of CREA (REALTOR®, REALTORS®) and/or the quality of services they provide (MLS®, Multiple Listing Service®)

Listing information last updated on April 12th, 2025 at 5:02pm MDT