

# \$389,900 - 2128 Hammond Court, Edmonton

MLS® #E4428887

**\$389,900**

3 Bedroom, 2.50 Bathroom, 1,295 sqft  
Single Family on 0.00 Acres

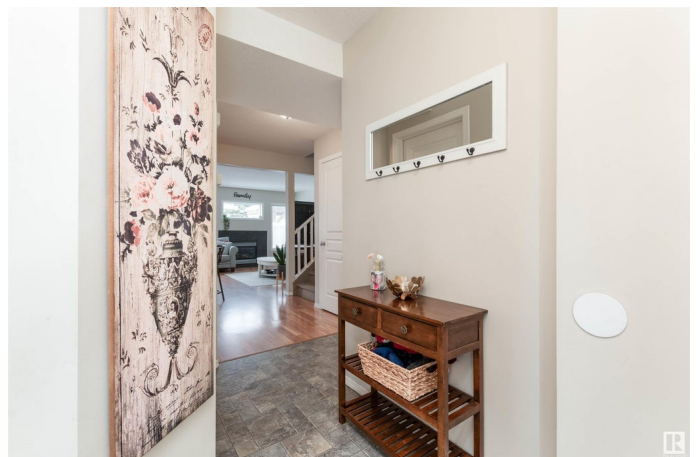
The Hamptons, Edmonton, AB

Welcome to this beautiful home in The Hamptons. This well maintained 3 bedroom half duplex is perfect home for a family or as an investment. The main floor features a bright entry way, a good sized maple hardwood kitchen with an island eating bar, opening to a bright, large living room with a cozy natural gas fireplace and eating area with leads to your deck and a good sized back yard. Upstairs is the primary bedroom, with a walk in closet and 4 piece ensuite bathroom. In addition there are 2 more bedrooms and the main 4 piece bathroom. downstairs is room for an additional bedroom, recreation room bathroom and storage. To top is off you have a single garage, a long driveway and extra parking outfront. Great location just of the Henday with great access to shopping and services.

Built in 2007

## Essential Information

MLS® #	E4428887
Price	\$389,900
Bedrooms	3
Bathrooms	2.50
Full Baths	2
Half Baths	1
Square Footage	1,295



Acres	0.00
Year Built	2007
Type	Single Family
Sub-Type	Half Duplex
Style	2 Storey
Status	Active

### **Community Information**

Address	2128 Hammond Court
Area	Edmonton
Subdivision	The Hamptons
City	Edmonton
County	ALBERTA
Province	AB
Postal Code	T6M 0J1

### **Amenities**

Amenities	Deck, No Animal Home, No Smoking Home
Parking Spaces	2
Parking	Single Garage Attached

### **Interior**

Interior Features	ensuite bathroom
Appliances	Dishwasher-Built-In, Dryer, Garage Control, Garage Opener, Microwave Hood Fan, Refrigerator, Stove-Electric, Washer, Window Coverings
Heating	Forced Air-1, Natural Gas
Fireplace	Yes
Fireplaces	Tile Surround
Stories	2
Has Basement	Yes
Basement	Full, Unfinished

### **Exterior**

Exterior	Wood, Vinyl
Exterior Features	Fenced, Flat Site, Golf Nearby, Landscaped, Level Land, Playground Nearby, Public Transportation, Schools, Shopping Nearby
Roof	Asphalt Shingles
Construction	Wood, Vinyl
Foundation	Concrete Perimeter

## Additional Information

Date Listed April 3rd, 2025

Days on Market 8

Zoning Zone 58

DATA IS DEEMED RELIABLE BUT IS NOT GUARANTEED ACCURATE BY THE REALTORS® ASSOCIATION OF EDMONTON. COPYRIGHT 2025 BY THE REALTORS® ASSOCIATION OF EDMONTON. ALL RIGHTS RESERVED. Trademarks are owned or controlled by the Canadian Real Estate Association (CREA) and identify real estate professionals who are members of CREA (REALTOR®, REALTORS®) and/or the quality of services they provide (MLS®, Multiple Listing Service®)

Listing information last updated on April 11th, 2025 at 6:47pm MDT