

\$349,900 - 180 Brookview Way, Stony Plain

MLS® #E4428839

\$349,900

3 Bedroom, 2.50 Bathroom, 1,221 sqft
Single Family on 0.00 Acres

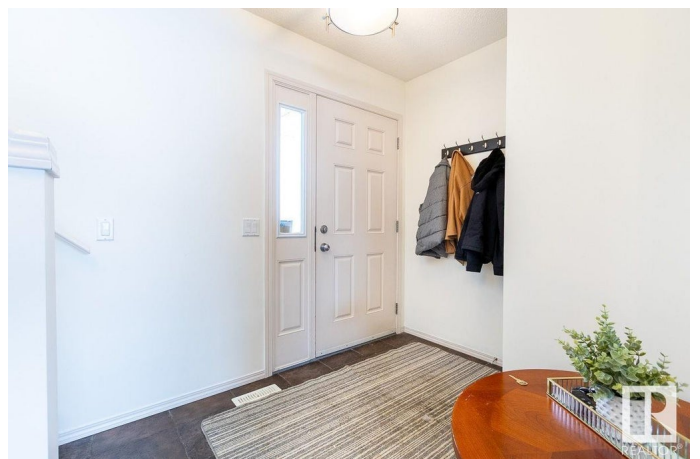
Brookview, Stony Plain, AB

Nestled in the welcoming, family-friendly neighborhood of Brookview, this charming half-duplex offers a functional blend of comfort & lifestyle. Large, south facing windows fill the open-concept main floor w/ light, showcasing rich espresso cabinets, hardwood & SS appliances. The kitchen features a spacious corner pantry & central island w/ seating for two, thoughtfully situated between generous living & dining areas to maximize entertaining space. A 2pc powder room adjacent to the double attached garage completes this level. Sliding doors lead to an expansive, sunny back yard perfect for kids, pets, plants & summer BBQs! Upstairs finds 3 well-appointed bedrooms, a 4pc bath & brand-new washer/dryer to make laundry day a breeze. The partially developed basement is awaiting your personal touch w/ a rec room, 3pc bath, & plenty of storage. A more convenient location is hard to find - groceries, golf, parks & shopping all within walking distance & a 20 minute commute to Edmonton – start living in Stony Plain!

Built in 2010

Essential Information

MLS® #	E4428839
Price	\$349,900



Bedrooms	3
Bathrooms	2.50
Full Baths	2
Half Baths	1
Square Footage	1,221
Acres	0.00
Year Built	2010
Type	Single Family
Sub-Type	Half Duplex
Style	2 Storey
Status	Active

Community Information

Address	180 Brookview Way
Area	Stony Plain
Subdivision	Brookview
City	Stony Plain
County	ALBERTA
Province	AB
Postal Code	T7Z 2X7

Amenities

Amenities	Off Street Parking, On Street Parking, Deck, Front Porch, Hot Water Electric, Smart/Program. Thermostat, Vinyl Windows, See Remarks
Parking Spaces	4
Parking	Double Garage Attached

Interior

Appliances	Dishwasher-Built-In, Dryer, Garage Control, Garage Opener, Microwave Hood Fan, Refrigerator, Stove-Electric, Washer, Window Coverings, See Remarks
Heating	Forced Air-1, Natural Gas
Stories	2
Has Basement	Yes
Basement	Full, Partially Finished

Exterior

Exterior	Wood, Vinyl
Exterior Features	Fenced, Golf Nearby, Landscaped, No Back Lane, Playground Nearby,

Shopping Nearby, Sloping Lot

Roof Asphalt Shingles
Construction Wood, Vinyl
Foundation Concrete Perimeter

School Information

Elementary Westview/St. John Paul II
Middle Westview/St. John Paul II
High Memorial Comp/St. Peter

Additional Information

Date Listed April 3rd, 2025
Days on Market 8
Zoning Zone 91

DATA IS DEEMED RELIABLE BUT IS NOT GUARANTEED ACCURATE BY THE REALTORS® ASSOCIATION OF EDMONTON. COPYRIGHT 2025 BY THE REALTORS® ASSOCIATION OF EDMONTON. ALL RIGHTS RESERVED. Trademarks are owned or controlled by the Canadian Real Estate Association (CREA) and identify real estate professionals who are members of CREA (REALTOR®, REALTORS®) and/or the quality of services they provide (MLS®, Multiple Listing Service®)

Listing information last updated on April 11th, 2025 at 6:47pm MDT