

\$219,900 - 332 9704 174 Street, Edmonton

MLS® #E4428812

\$219,900

2 Bedroom, 2.00 Bathroom, 979 sqft
Condo / Townhouse on 0.00 Acres

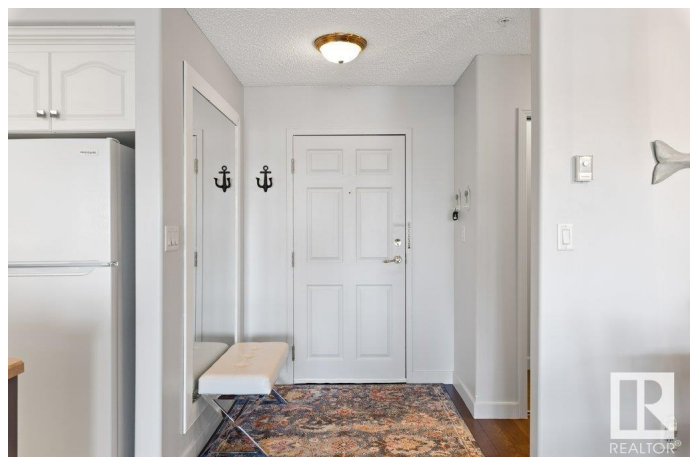
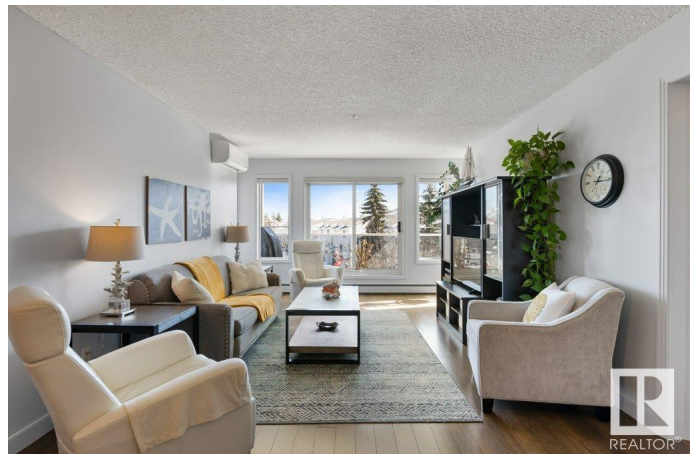
Terra Losa, Edmonton, AB

Welcome Home! This 978 sq ft 2 bed, 2 bath unit is **SIMPLY STUNNING!** With bright windows allowing the light to flow throughout. Meticulously & lovingly cared for! Featuring a spacious entrance, open kitchen layout with white cupboards, plenty of prep space & appliances only a year old! In suite laundry is off kitchen with a stacked washer/dryer & custom shelving. The living room is bright with 2 extra side windows & access to the balcony-NO parking lot views here! The primary suite is very spacious & features a 4 pc ensuite! The 2nd bedroom is steps to the 3 piece bath, perfect for guests! Upgraded flooring, newer AC, blinds, fresh paint & more! Perks include titled underground parking with storage, just steps to the elevator & parking is angled for extra door space! Extra outdoor stall available for rent. Building features a car wash, exercise & social room. Located near major shopping, public transit & easy access to all amenities, including Westend Seniors Activity Centre. Heat & water included in fees

Built in 2002

Essential Information

MLS® #	E4428812
Price	\$219,900
Bedrooms	2



Bathrooms	2.00
Full Baths	2
Square Footage	979
Acres	0.00
Year Built	2002
Type	Condo / Townhouse
Sub-Type	Lowrise Apartment
Style	Single Level Apartment
Status	Active

Community Information

Address	332 9704 174 Street
Area	Edmonton
Subdivision	Terra Losa
City	Edmonton
County	ALBERTA
Province	AB
Postal Code	T5T 6J4

Amenities

Amenities	Car Wash, Deck, Exercise Room, Parking-Visitor, Security Door, Social Rooms, See Remarks
Parking	Heated, Underground

Interior

Interior Features	ensuite bathroom
Appliances	Air Conditioning-Central, Dishwasher-Built-In, Microwave Hood Fan, Refrigerator, Stacked Washer/Dryer, Stove-Electric, Window Coverings
Heating	Baseboard, Hot Water, Natural Gas
# of Stories	4
Stories	4
Has Basement	Yes
Basement	None, No Basement

Exterior

Exterior	Wood, Stucco
Exterior Features	Flat Site, Landscaped, Park/Reserve, Playground Nearby, Public Transportation, Shopping Nearby
Roof	Asphalt Shingles

Construction	Wood, Stucco
Foundation	Concrete Perimeter

Additional Information

Date Listed	April 3rd, 2025
Days on Market	1
Zoning	Zone 20
Condo Fee	\$654

DATA IS DEEMED RELIABLE BUT IS NOT GUARANTEED ACCURATE BY THE REALTORS® ASSOCIATION OF EDMONTON. COPYRIGHT 2025 BY THE REALTORS® ASSOCIATION OF EDMONTON. ALL RIGHTS RESERVED. Trademarks are owned or controlled by the Canadian Real Estate Association (CREA) and identify real estate professionals who are members of CREA (REALTOR®, REALTORS®) and/or the quality of services they provide (MLS®, Multiple Listing Service®)

Listing information last updated on April 4th, 2025 at 6:17pm MDT