

\$620,000 - 302 Bridgeport Place, Leduc

MLS® #E4428512

\$620,000

5 Bedroom, 3.50 Bathroom, 2,159 sqft
Single Family on 0.00 Acres

Bridgeport, Leduc, AB

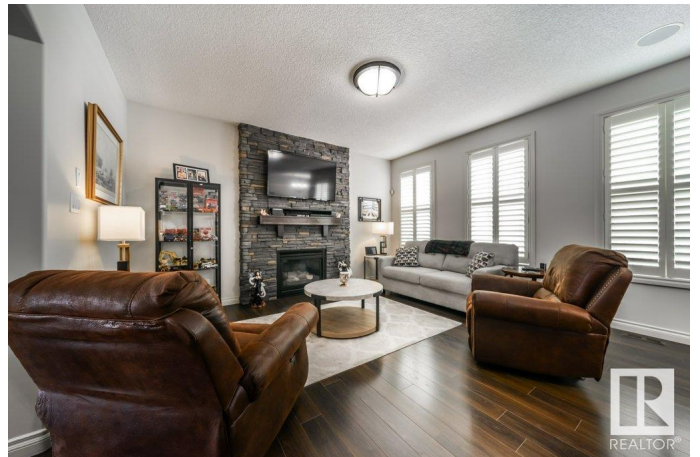
This immaculately clean & meticulously maintained 2158 SqFt two-storey home offers 5 bedrooms (3 upstairs, 2 in the basement) & 4 bathrooms. The spacious garage (26' wide x 28' deep) is heated, fits a large truck, & provides ample space to walk around parked vehicles. Backing onto greenspace & walking paths, the property features beautiful landscaping, a fenced yard, fire pit area, & great views from the composite deck. Inside, enjoy a large front entry with walk-in closet, a laundry room with walk-through pantry, & a kitchen with granite countertops, gas stove, & built-in oven. The living room is highlighted by a cozy gas fireplace with stone facing.

Upstairs, the bonus room has vaulted ceilings & a garden door leading to the balcony. The primary bedroom includes a 5-piece ensuite & walk-in closet. Recent upgrades include new gutters, garage door/operator, dishwasher, washer, dryer, laundry cabinets, shed, lights, paint, fire pit & more. Air conditioning & exposed aggregate driveway complete the package.

Built in 2012

Essential Information

MLS® #	E4428512
Price	\$620,000



Bedrooms	5
Bathrooms	3.50
Full Baths	3
Half Baths	1
Square Footage	2,159
Acres	0.00
Year Built	2012
Type	Single Family
Sub-Type	Detached Single Family
Style	2 Storey
Status	Active

Community Information

Address	302 Bridgeport Place
Area	Leduc
Subdivision	Bridgeport
City	Leduc
County	ALBERTA
Province	AB
Postal Code	T9E 0M2

Amenities

Amenities	Air Conditioner, Deck, No Smoking Home, Vaulted Ceiling
Parking	Double Garage Attached, Heated, Over Sized

Interior

Interior Features	ensuite bathroom
Appliances	Air Conditioning-Central, Dishwasher-Built-In, Dryer, Garage Control, Garage Opener, Oven-Built-In, Refrigerator, Storage Shed, Stove-Countertop Gas, Washer, Window Coverings, Garage Heater
Heating	Forced Air-1, Natural Gas
Fireplace	Yes
Fireplaces	Direct Vent
Stories	3
Has Basement	Yes
Basement	Full, Finished

Exterior

Exterior	Wood, Stone, Vinyl
----------	--------------------

Exterior Features	Airport Nearby, Backs Onto Park/Trees, Cul-De-Sac, Environmental Reserve, Fenced, Landscaped
Roof	Asphalt Shingles
Construction	Wood, Stone, Vinyl
Foundation	Concrete Perimeter

School Information

Elementary	Willow Park School
Middle	Ecole Leduc Junior High
High	Ohpaho Secondary School

Additional Information

Date Listed	April 2nd, 2025
Days on Market	2
Zoning	Zone 81

DATA IS DEEMED RELIABLE BUT IS NOT GUARANTEED ACCURATE BY THE REALTORS® ASSOCIATION OF EDMONTON. COPYRIGHT 2025 BY THE REALTORS® ASSOCIATION OF EDMONTON. ALL RIGHTS RESERVED. Trademarks are owned or controlled by the Canadian Real Estate Association (CREA) and identify real estate professionals who are members of CREA (REALTOR®, REALTORS®) and/or the quality of services they provide (MLS®, Multiple Listing Service®)

Listing information last updated on April 4th, 2025 at 6:02pm MDT