

Courtesy Of Martin Zhang Of MaxWell Polaris

\$829,000 - 911 Lamb Crescent, Edmonton

MLS® #E4424265

\$829,000

5 Bedroom, 3.00 Bathroom, 1,610 sqft
Single Family on 0.00 Acres

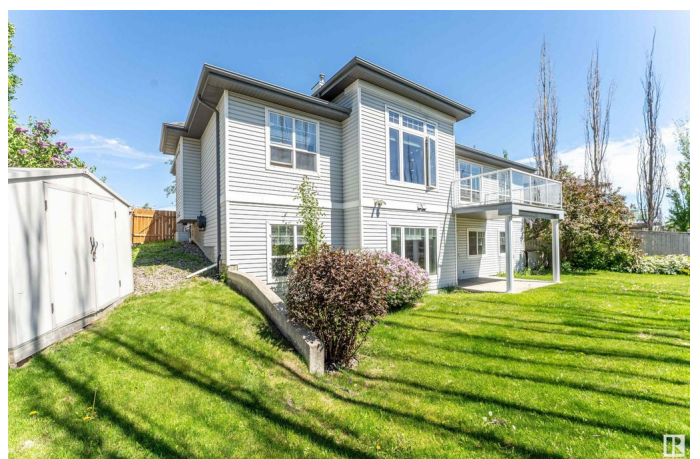
Leger, Edmonton, AB

Experience the pinnacle of luxury and comfort in this ULTRA-RARE 5-BEDROOM+1DEN WALKOUT BUNGALOW in the prestigious community of Leger. DOUBLE GARAGE with TANDEM ON ONE SIDE. The MAIN floor boasts THREE spacious bedrooms AND a DEN, including a primary bedroom with a dreamy ensuite featuring a glass shower and freestanding tub. The open-concept living area includes a great room with a cozy three-sided gas fireplace, a dining area, and a chef's kitchen equipped with granite countertops, a gas stove, a large island, and hardwood flooring. The WALKOUT level continues to impress with a supersized family room/gym space, a media room, TWO ADDITIONAL bedrooms, and a FULL bath. Enjoy the warmth of HEATED FLOORS in the master bedroom and throughout the basement, providing year-round comfort. The enormous pie-shaped yard is perfect for family gatherings. Air-conditioned and conveniently located just minutes from Lillian Osborne High School, George H. Luck School, and Rec Centre. ONE OF A KIND IN THE CITY!

Built in 2001

Essential Information

MLS® #	E4424265
Price	\$829,000



Bedrooms	5
Bathrooms	3.00
Full Baths	3
Square Footage	1,610
Acres	0.00
Year Built	2001
Type	Single Family
Sub-Type	Detached Single Family
Style	2 Storey
Status	Active

Community Information

Address	911 Lamb Crescent
Area	Edmonton
Subdivision	Leger
City	Edmonton
County	ALBERTA
Province	AB
Postal Code	T6R 2X8

Amenities

Amenities	Air Conditioner, No Smoking Home, Walkout Basement, Wet Bar, See Remarks
Parking	Double Garage Attached, Over Sized, See Remarks

Interior

Interior Features	ensuite bathroom
Appliances	Air Conditioning-Central, Dishwasher-Built-In, Dryer, Garage Control, Garage Opener, Oven-Microwave, Refrigerator, Storage Shed, Stove-Gas, Washer, Window Coverings
Heating	Forced Air-1, Natural Gas
Stories	2
Has Basement	Yes
Basement	Full, Finished

Exterior

Exterior	Wood, Stucco
Exterior Features	Cul-De-Sac, Fenced, Playground Nearby, Public Transportation, Schools, Shopping Nearby

Roof	Asphalt Shingles
Construction	Wood, Stucco
Foundation	Concrete Perimeter

Additional Information

Date Listed	March 6th, 2025
-------------	-----------------

Days on Market	7
----------------	---

Zoning	Zone 14
--------	---------

DATA IS DEEMED RELIABLE BUT IS NOT GUARANTEED ACCURATE BY THE REALTORS® ASSOCIATION OF EDMONTON. COPYRIGHT 2025 BY THE REALTORS® ASSOCIATION OF EDMONTON. ALL RIGHTS RESERVED. Trademarks are owned or controlled by the Canadian Real Estate Association (CREA) and identify real estate professionals who are members of CREA (REALTOR®, REALTORS®) and/or the quality of services they provide (MLS®, Multiple Listing Service®)

Listing information last updated on March 13th, 2025 at 12:32am MDT