

\$360,000 - 102 10141 95 Street, Edmonton

MLS® #E4420623

\$360,000

2 Bedroom, 2.00 Bathroom, 1,503 sqft
Condo / Townhouse on 0.00 Acres

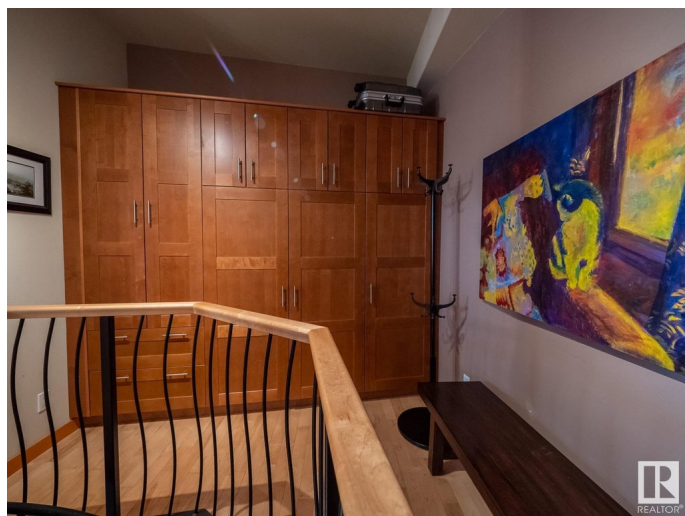
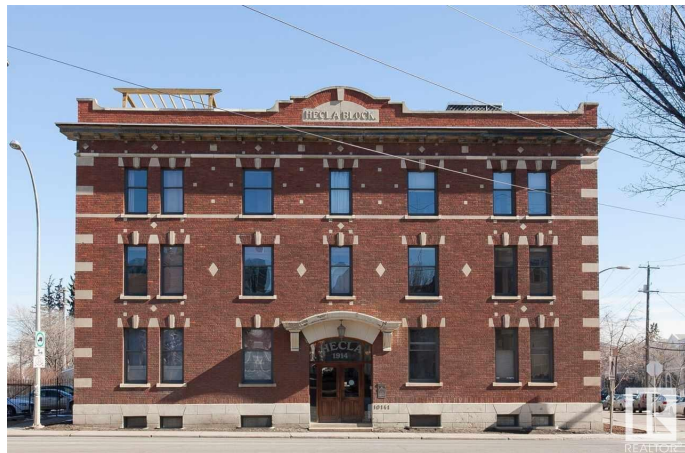
Boyle Street, Edmonton, AB

Welcome to the historic Hecla Lofts, one of Edmonton's 1st generation for apartment living that is located minutes from Downtown and a stoneâ€™s throw to the new LRT Valley Line station. This unit is 1 of 14, so living here, is like being a part of a tight knit community. Walking into the unit you will immediately appreciate the exposed brick and large windows that let in ample natural light. On the main level you will find a spacious kitchen outfitted with newer brushed metal appliances (stainless steel look without the fingerprints-yay!). You will also find a dining area and family area, itâ€™s an open concept so what you choose to do with the space is completely up to you! You will also find a 4 piece bath (heated floors) and ample built-in storage. The spiral staircase leads you to the lower level where you will find a large primary bedroom that has a 3 piece ensuite with heated floors! You also have access to the roof top patio with City and river valley views. Perfect for the urban enthusiast!

Built in 1914

Essential Information

MLS® #	E4420623
Price	\$360,000
Bedrooms	2



Bathrooms	2.00
Full Baths	2
Square Footage	1,503
Acres	0.00
Year Built	1914
Type	Condo / Townhouse
Sub-Type	Lowrise Apartment
Style	Loft
Status	Active

Community Information

Address	102 10141 95 Street
Area	Edmonton
Subdivision	Boyle Street
City	Edmonton
County	ALBERTA
Province	AB
Postal Code	T5H 2A8

Amenities

Amenities	Ceiling 10 ft., Exercise Room, Hot Water Natural Gas, No Smoking Home, Parking-Visitor, Secured Parking, Vinyl Windows
Parking	Parking Pad Cement/Paved

Interior

Interior Features	ensuite bathroom
Appliances	Dishwasher-Built-In, Dryer, Refrigerator, Stove-Electric, Washer
Heating	Forced Air-1, Natural Gas
# of Stories	4
Stories	2
Has Basement	Yes
Basement	None, No Basement

Exterior

Exterior	Brick
Exterior Features	Public Swimming Pool, Public Transportation, River Valley View, Shopping Nearby, Stream/Pond, View City, View Downtown, See Remarks
Roof	Tar & Gravel

Construction	Brick
Foundation	Concrete Perimeter

Additional Information

Date Listed	February 6th, 2025
Days on Market	66
Zoning	Zone 13
Condo Fee	\$631

DATA IS DEEMED RELIABLE BUT IS NOT GUARANTEED ACCURATE BY THE REALTORS® ASSOCIATION OF EDMONTON. COPYRIGHT 2025 BY THE REALTORS® ASSOCIATION OF EDMONTON. ALL RIGHTS RESERVED. Trademarks are owned or controlled by the Canadian Real Estate Association (CREA) and identify real estate professionals who are members of CREA (REALTOR®, REALTORS®) and/or the quality of services they provide (MLS®, Multiple Listing Service®)

Listing information last updated on April 13th, 2025 at 6:47am MDT